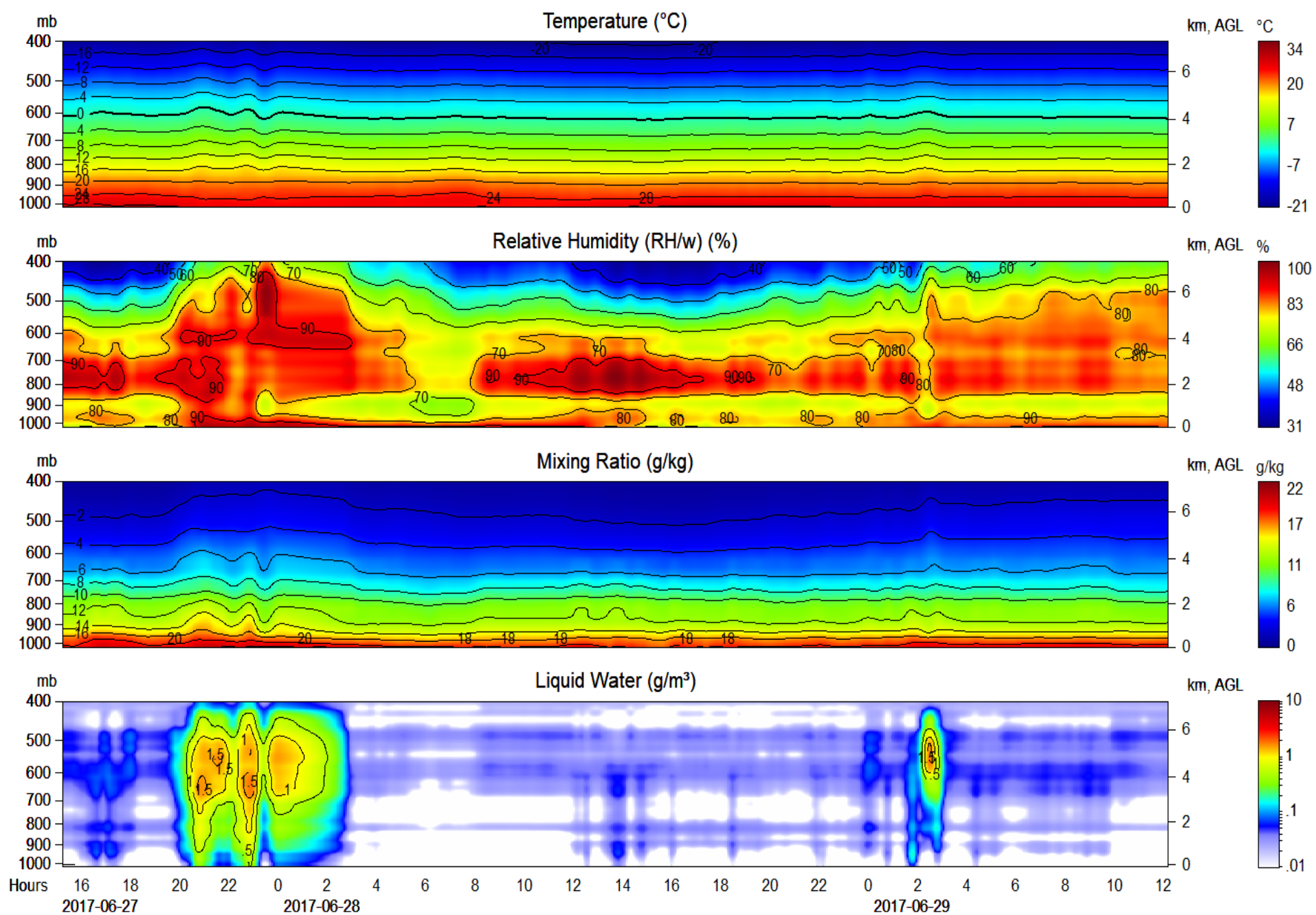
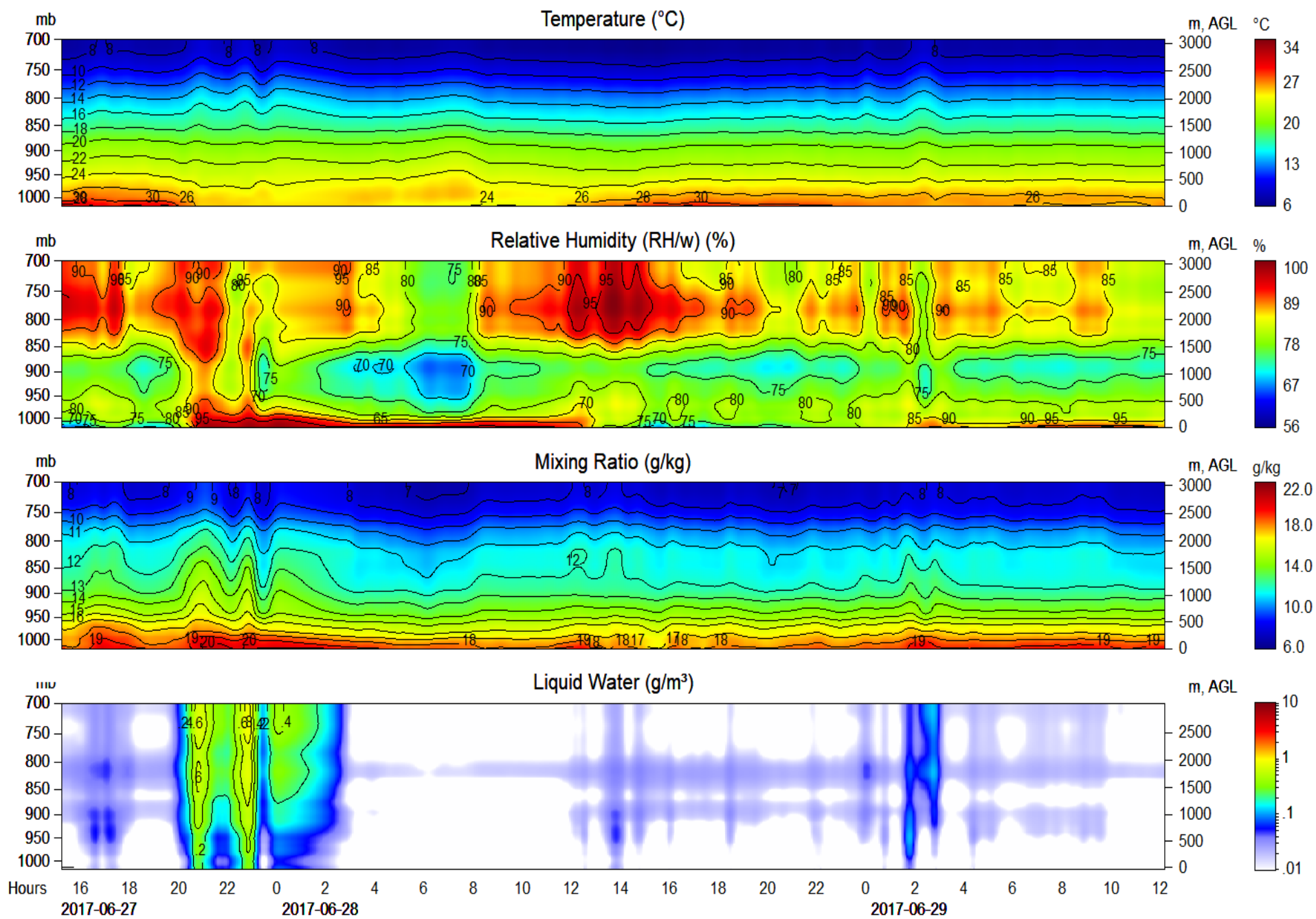




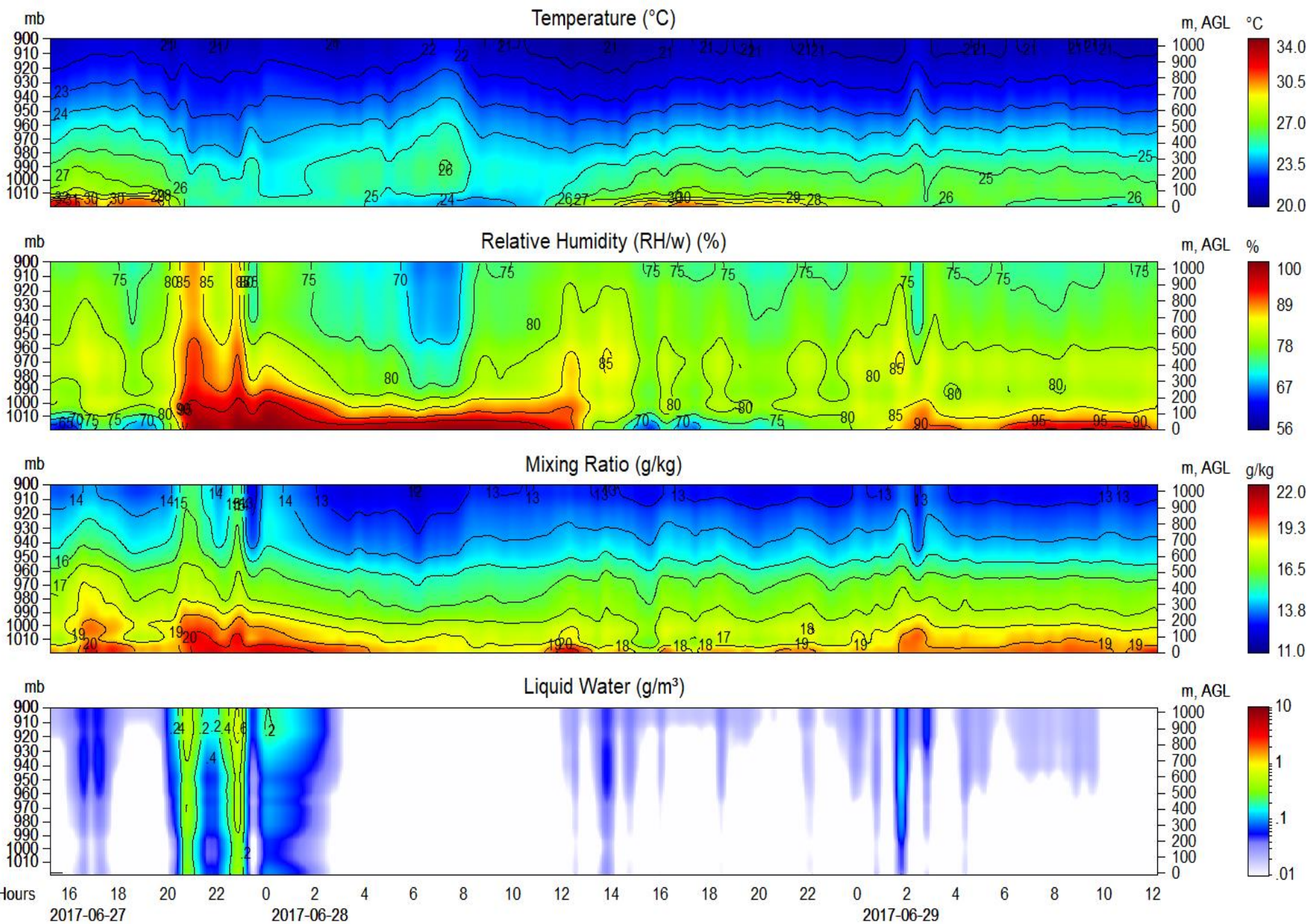
Wind Profiler, Thermodynamic Profiler and Radiosonde launch locations



Microwave Profiler to 7 km height



Microwave Profiler to 3 km height



Microwave Profiler to 1 km height

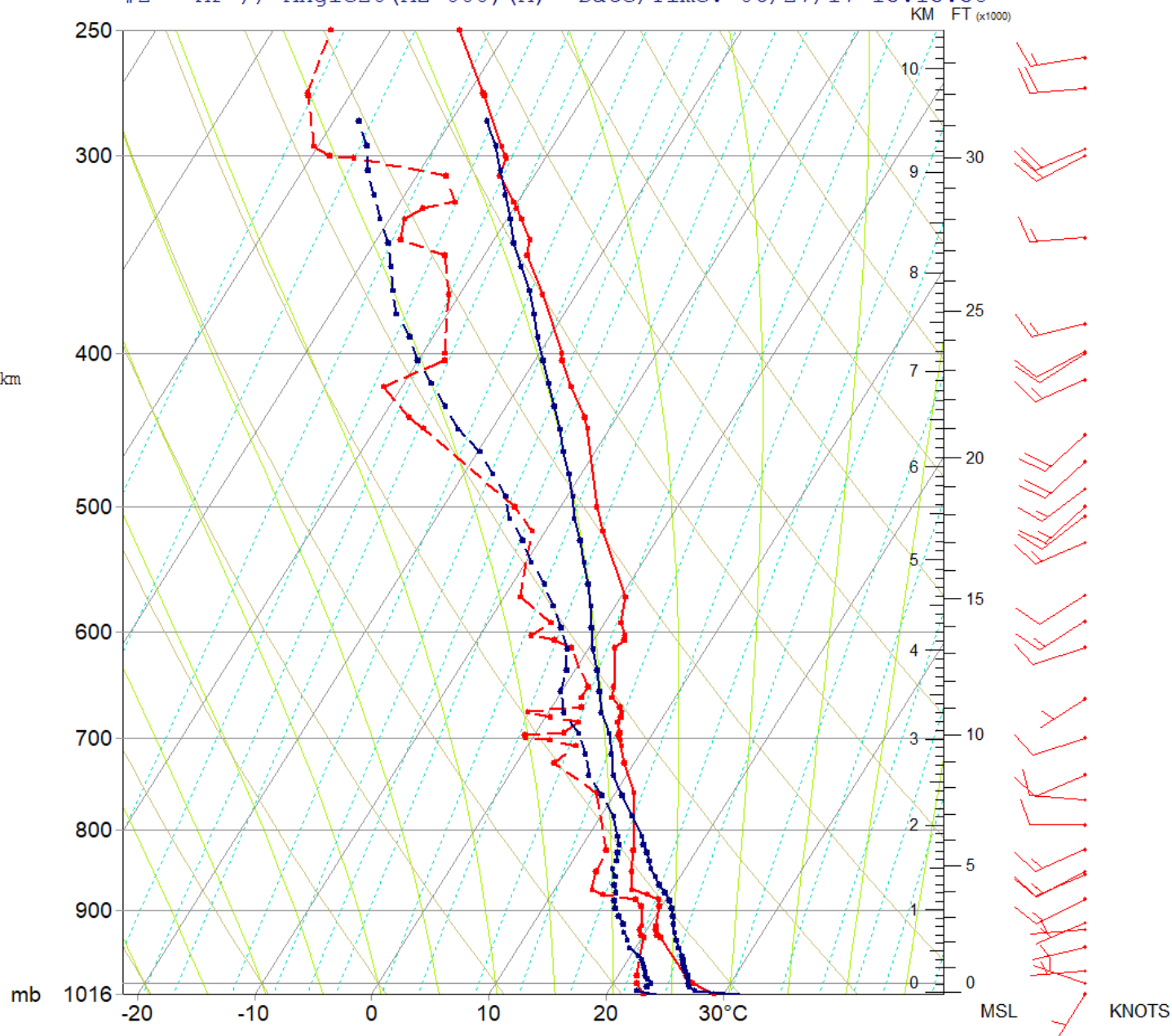
#1

#2

#1 - R // 74794 - KXMR - CAPE CANAVERAL, FL US DTG: 2017-06-27 15:00:00

#2 - MP // Angle20(AZ-000) (A) Date/Time: 06/27/17 15:15:58

TROP Lvl: 14750	--	m	AGL
FRZG Lvl: 4911	4326	m	AGL
ccLEL Hgt: 13918	--	m	AGL
lfcEL Hgt: 14262	--	m	AGL
LFC Hgt: 769	943	m	AGL
CCL Hgt: 1139	1348	m	AGL
LCL Hgt: 769	943	m	AGL
Water: 5.17	5.26	cm	
Hail: 0.64	0.64	cm	
T2Gust: 36	45	kt	
WindEx: 43	57	kt	
SWEAT: 194.2	172.0		
CAP: -0.6	-0.9		
Boydex: 96.9	98.1		
S{TT}: 32.0	46.7		
KO: -13.3	-16.5		
LI: -5.0	-10.0		
TT: 42.0	49.2		
KI: 27.1	37.8		
Tc: 30.8	32.3	°C	
Storm: 275/8	--	0-6km	
s-rH: 13	--	0-3km	
s-rH: 11	--	0-2km	
s-rH: 3	--	0-1km	
CAPE+ only: 2554	2918	J/kg	
CIN total: 0	0	J/kg	
DCAPE6.0km: 653	692	J/kg	
VGP 0-4km: 0.332	--		
EHI 0-2km: .3	--		
MVV: 71	--	m/s	
BRN: 526	--		
FOG FSI: 53.2	--		
Threat: -1.3	2.1		
Point: 21.1	19.1	°C	
1000-500 mb: 5752	5734	m	
1000-700 mb: 3043	3047	m	
1000-850 mb: 1413	1418	m	
850-500 mb: 4339	4317	m	
850-700 mb: 1630	1629	m	
700-500 mb: 2709	2687	m	
600-400 mb: 3158	3130	m	



Radiosonde and MP Angle 20(A) at 15Z 27 June 2017

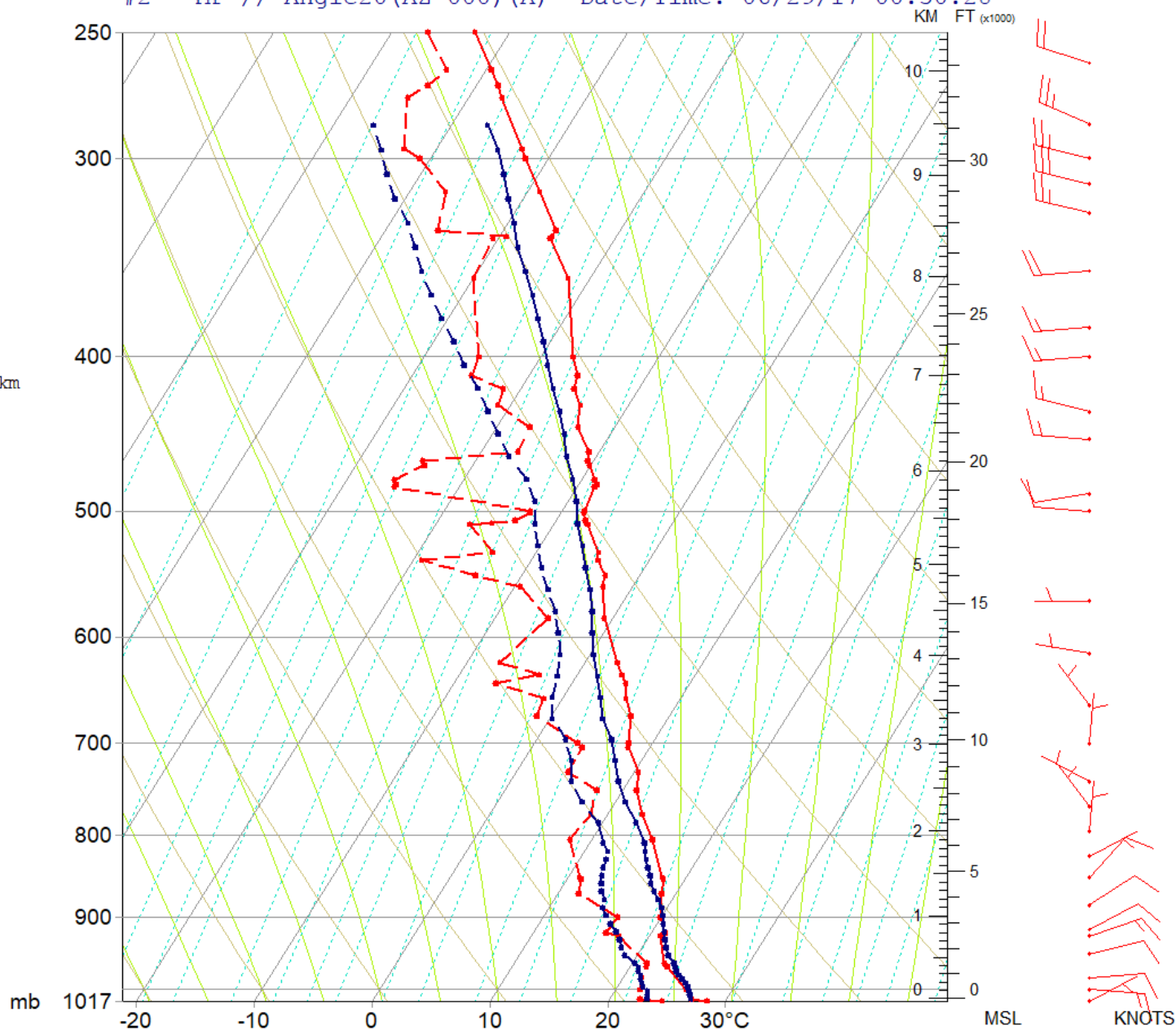
#1

#2

#1 - R // 74794 - KXMR - CAPE CANAVERAL, FL US DTG: 2017-06-29 00:00:00

#2 - MP // Angle20(AZ-000) (A) Date/Time: 06/29/17 00:30:28

TROP Lvl:	14423	--	m	AGL
FRZG Lvl:	4569	4311	m	AGL
cclEL Hgt:	14045	--	m	AGL
lfcEL Hgt:	14641	--	m	AGL
LFC Hgt:	489	693	m	AGL
CCL Hgt:	1320	1302	m	AGL
LCL Hgt:	489	427	m	AGL
Water:	4.81	5.07	cm	
Hail:	0.64	0.64	cm	
T2Gust:	38	34	kt	
WindEx:	43	41	kt	
SWEAT:	159.0	154.8		
CAP:	-0.9	0.8		
Boydén:	96.9	97.5		
S{TT}:	40.9	43.7		
KO:	-9.4	-13.8		
LI:	-8.0	-7.0		
TT:	45.2	47.5		
KI:	32.8	34.9		
Tc:	31.9	31.6	°C	
Storm:	21/2	--	0-6km	
s-rH:	-24	--	0-3km	
s-rH:	-21	--	0-2km	
s-rH:	-17	--	0-1km	
CAPE+ only:	3228	2054	J/kg	
CIN total:	0	-10	J/kg	
DCAPE6.0km:	947	519	J/kg	
VGP 0-4km:	0.397	--		
EHI 0-2km:	.1	--		
MVV:	80	--	m/s	
BRN:	188	--		
FOG FSI:	37.4	--		
Threat:	-2.5	-1.3		
Point:	22.1	21.7	°C	
1000-500 mb:	5749	5728	m	
1000-700 mb:	3049	3042	m	
1000-850 mb:	1413	1413	m	
850-500 mb:	4336	4315	m	
850-700 mb:	1636	1629	m	
700-500 mb:	2701	2687	m	
600-400 mb:	3150	3132	m	



Radiosonde and MP Angle 20(A) at 00Z 29 June 2017

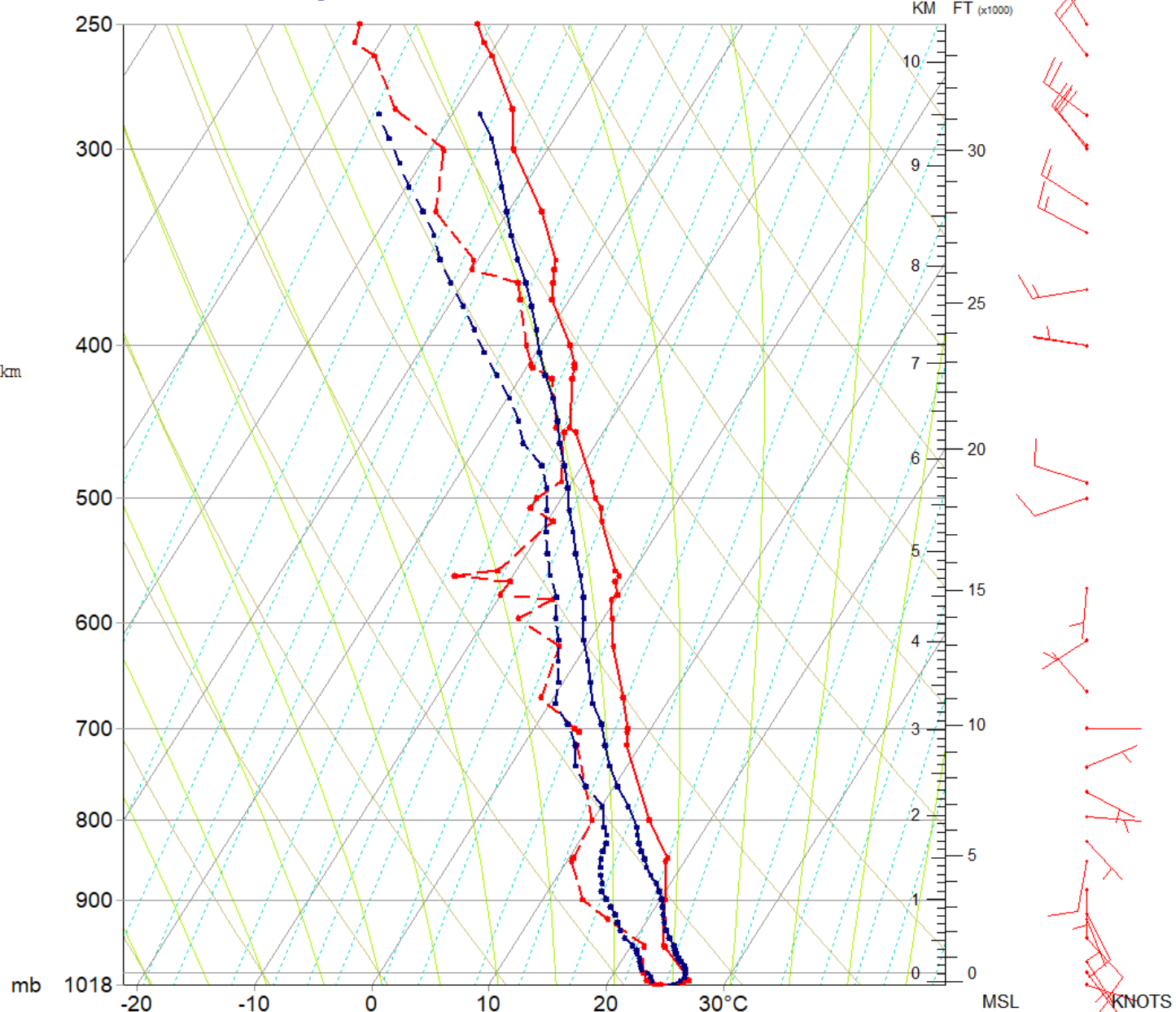
#1

#2

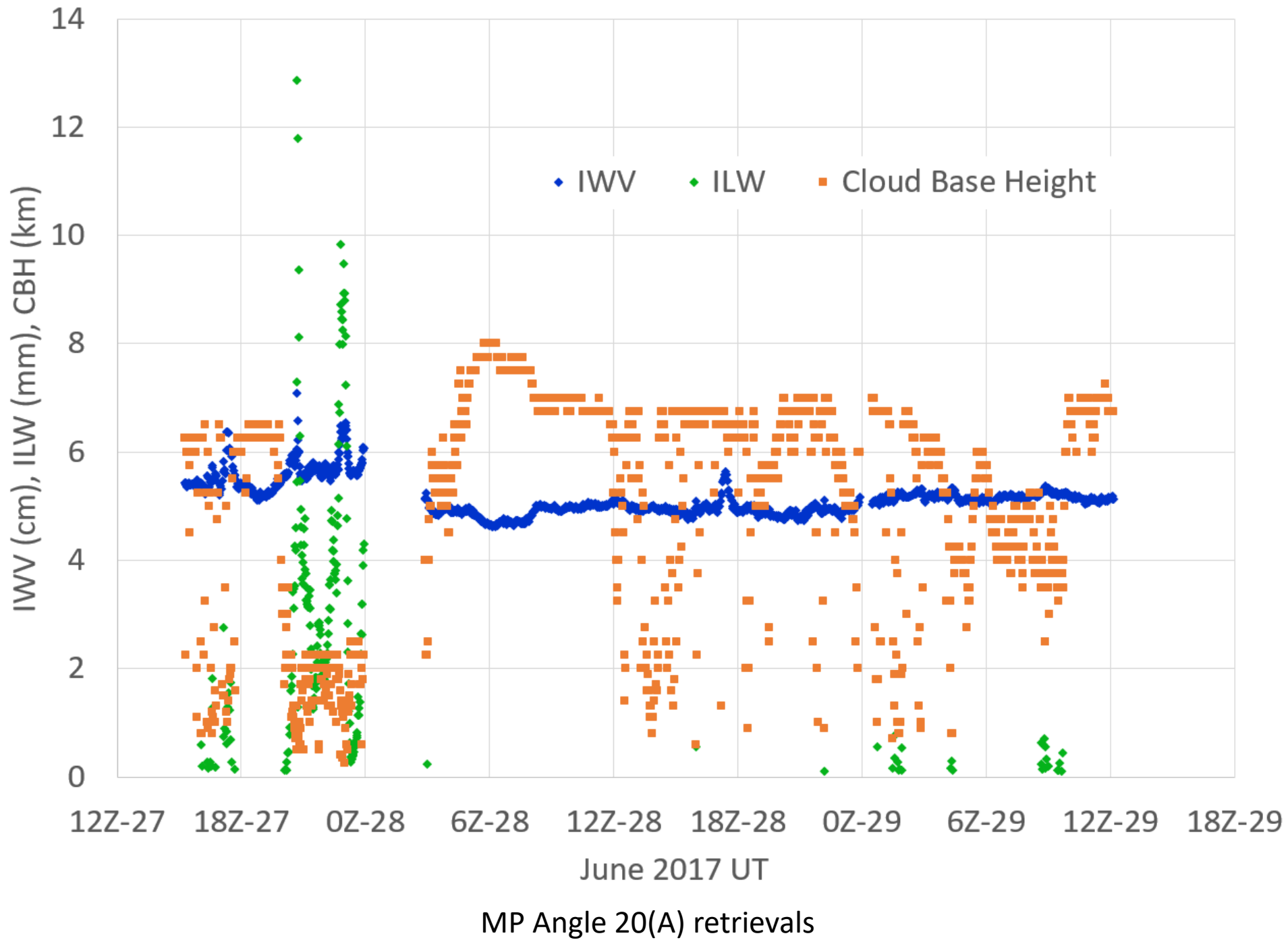
#1 - R // 74794 - KXMR - CAPE CANAVERAL, FL US DTG: 2017-06-29 10:00:00

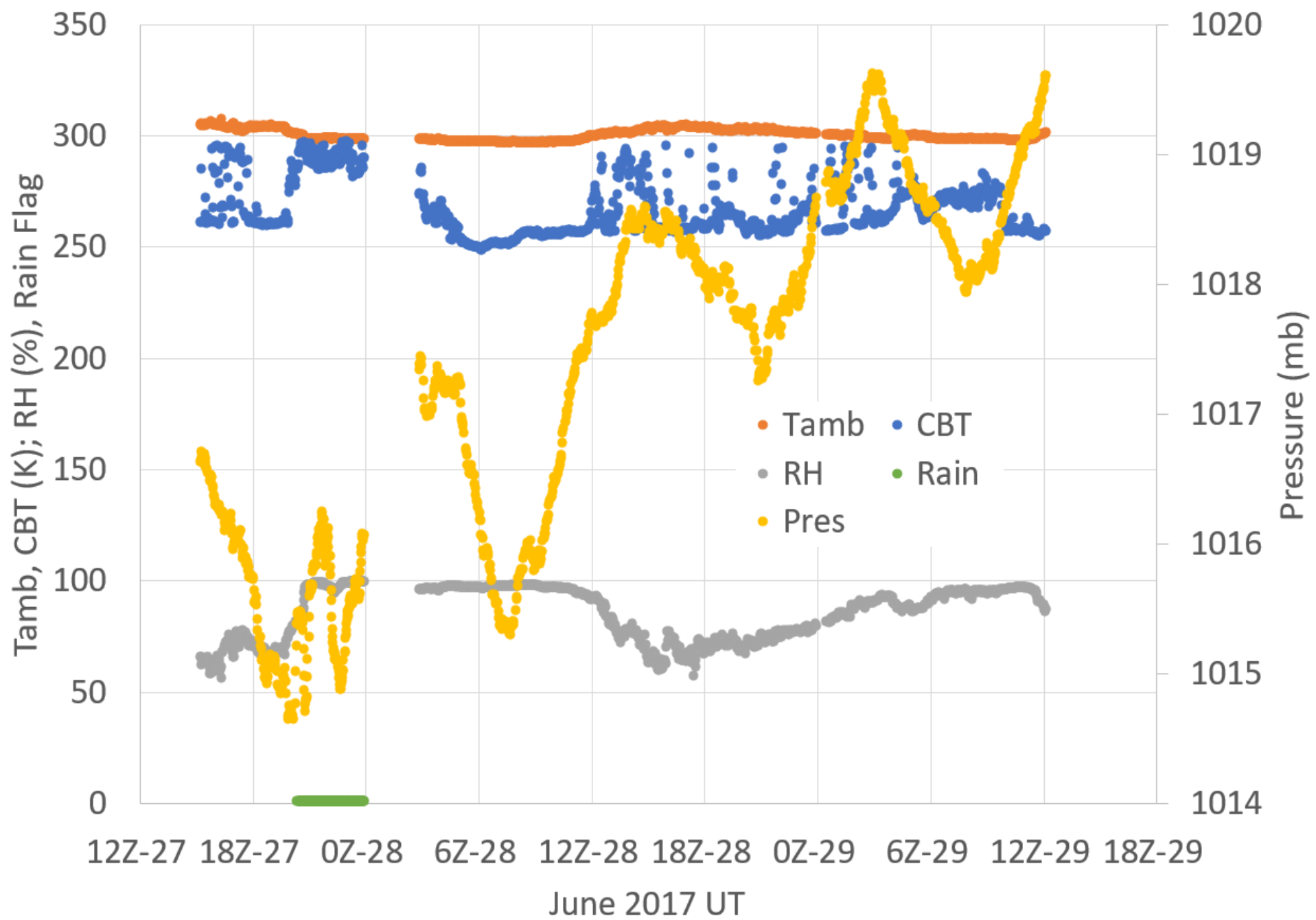
#2 - MP // Angle20(AZ-000) (A) Date/Time: 06/29/17 10:00:03

TROP Lvl: 14345	-- m AGL
FRZG Lvl: 4678	4166 m AGL
cclEL Hgt: 14422	-- m AGL
lfcEL Hgt: 13987	-- m AGL
LFC Hgt: 1815	864 m AGL
CCL Hgt: 1499	1271 m AGL
LCL Hgt: 65	91 m AGL
Water: 5.01	5.17 cm
Hail: 0.64	0.64 cm
T2Gust: 24	28 kt
WindEx: 24	35 kt
SWEAT: 153.8	154.8
CAP: 2.7	2.0
Boydex: 96.9	98.0
S{TT}: 38.5	45.4
KO: -8.9	-13.8
LI: -4.0	-7.0
TT: 43.0	48.3
KI: 31.4	36.0
Tc: 33.4	31.4 °C
Storm: 212/2	-- 0-6km
s-rH: 2	-- 0-3km
s-rH: 5	-- 0-2km
s-rH: 9	-- 0-1km
CAPE+ only: 1756	2151 J/kg
CIN total: -49	-29 J/kg
DCAPE6.0km: 633	406 J/kg
VGP 0-4km: 0.273	--
EH1 0-2km: .2	--
MVV: 59	-- m/s
BRN: 482	--
FOG FSI: 22.4	--
Threat: -3.8	-3.4
Point: 23.2	23.6 °C
1000-500 mb: 5755	5718 m
1000-700 mb: 3049	3038 m
1000-850 mb: 1414	1413 m
850-500 mb: 4342	4305 m
850-700 mb: 1636	1625 m
700-500 mb: 2706	2680 m
600-400 mb: 3153	3126 m



Radiosonde and MP Angle 20(A) at 10Z 29 June 2017





MP surface met and Cloud Base Temperature (CBT)